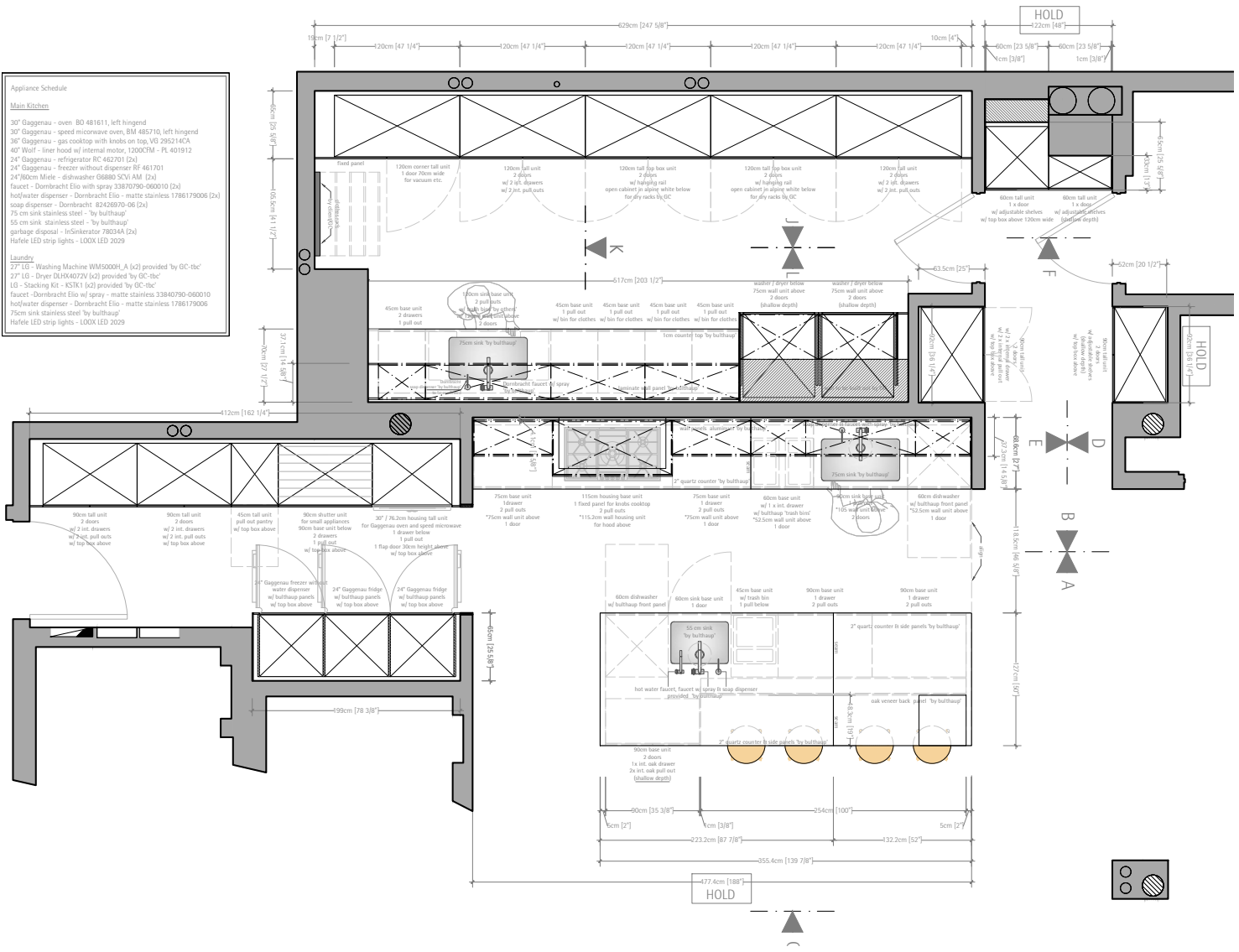
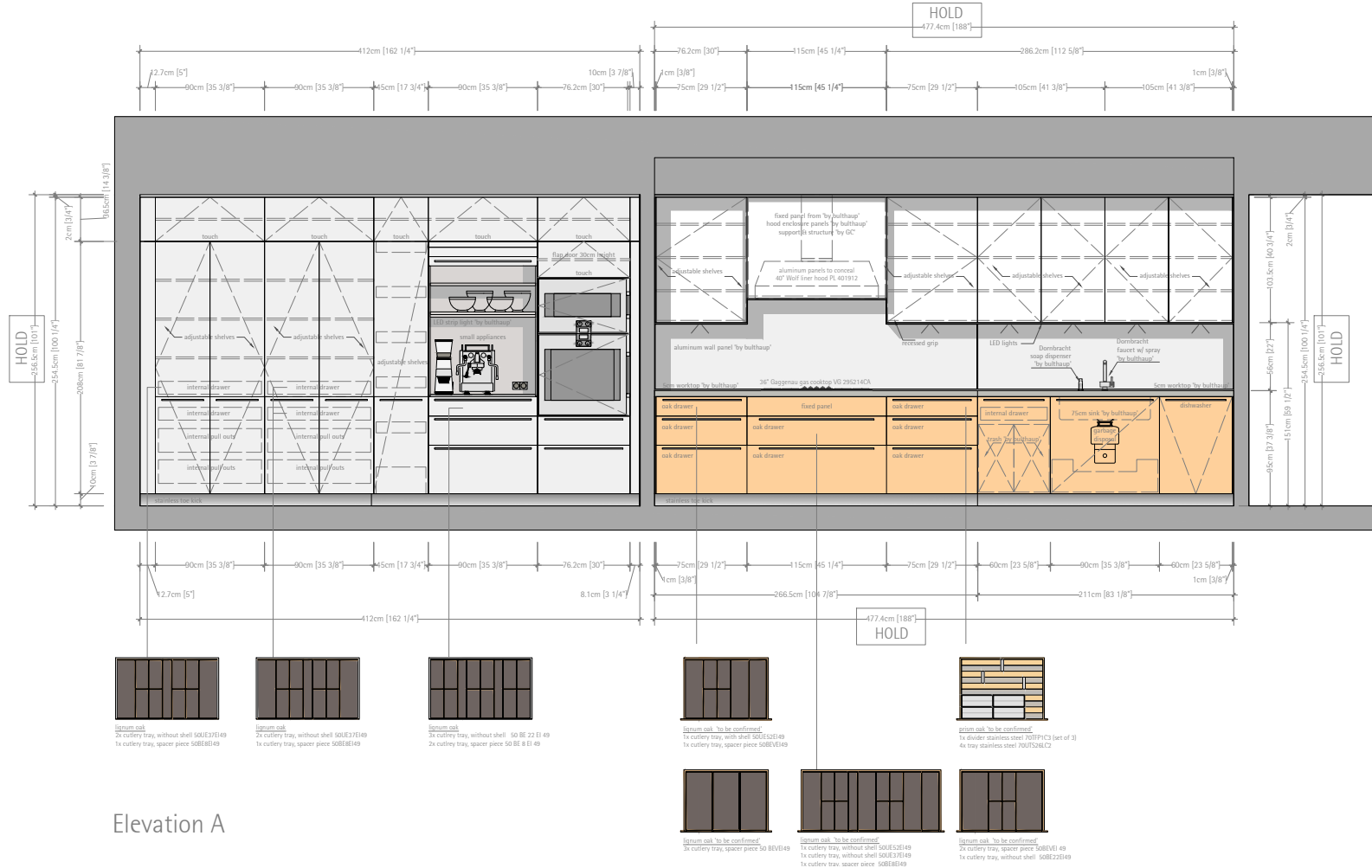


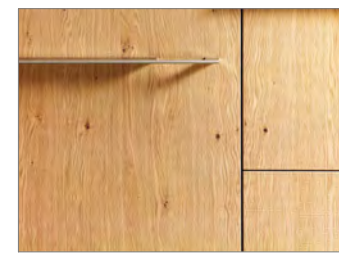
Appliance Schedule	
Main Kitchen	
30" Gaggenau - oven BO 481611, left hinged	
30" Gaggenau - speed microwave oven, BM 485110, left hinged	
36" Gaggenau - gas cooktop with knobs on top, VD 295214CA	
40" Wolf - liner hood w/ internal motor, 1200CFM - PL 401912	
24" Gaggenau - refrigerator RC 462701 (2x)	
24" Gaggenau - freezer without dispenser HF 461701	
24" 780cm Miele - dishwasher G6880 SSV1 AM (2x)	
faucet - Dornbracht Elio with spray 33870790-060010 (2x)	
hot/water dispenser - Dornbracht Elio - matte stainless 1786179006 (2x)	
soap dispenser - Dornbracht 82426970-06 (2x)	
75 cm sink stainless steel - by builtbaup	
55 cm sink stainless steel - by builtbaup	
garbage disposal - InSinkerator 78034A (2x)	
Hafele LED strip lights - LOOX LED 2029	
Laundry	
27" LG - Washing Machine WM5000H, A (x2) provided by GC-the'	
27" LG - Dryer DLR46072V (2x) provided by GC-the'	
LG - Stacking Kit - KSTK1 (x2) provided by GC-the'	
faucet - Dornbracht Elio w/ spray 3384790-060010	
hot/water dispenser - Dornbracht Elio - matte stainless 1786179006	
75cm sink stainless steel by builtbaup	
Hafele LED strip lights - LOOX LED 2029	

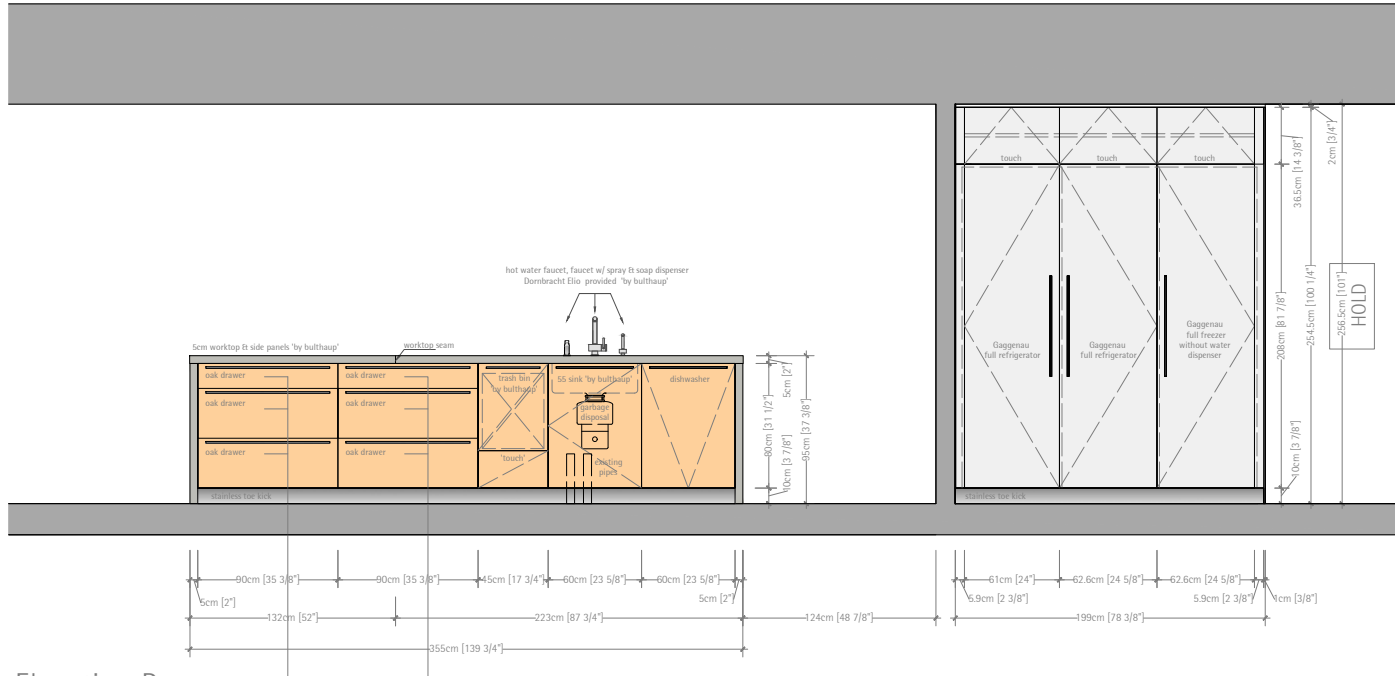




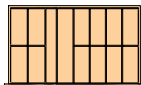
- finishes:**
- base units:** E1/H - oak veneer vertical grain
S6 - natural grey dull mat
 - island base units:** E1/H - oak veneer vertical grain
S6 - natural grey dull mat
 - tall units:** A1AX - aluminum
21 - alu natural
 - wall units:** A1AX - aluminum
21 - alu natural
 - wall panels:** A1AX - aluminum
21 - alu natural
 - worktops:** KSM1 - quartz
5cm
KD - light grey
 - handles:** G2 CN
long stainless steel handles
 - drawer box:** G5 and TM G0
touch (where noted)
steel box
14 silver-grey

Elevation A





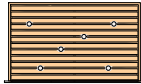
Elevation B



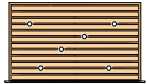
island cab. - to be confirmed
 1x cutlery tray, with shelf 50 BEE 22 EI 49
 1x cutlery tray, spacer piece 50 BEE 8 EI 49
 1x cutlery tray, with shelf 50 BEE 52 EI 49



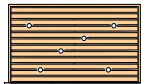
island cab. - to be confirmed
 1x knife tray 50 ME 37 EI 49
 1x cutlery tray, spacer piece 50 BEE 8 EI 49
 1x cutlery tray, with shelf 50 BEE 42 EI 49



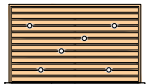
island cab.
 1x dish grill 70 GR 90 EI 49
 2x plate holders 70 TH 15 LA 3



island cab.
 1x dish grill 70 GR 90 EI 49
 2x plate holders 70 TH 15 LA 3



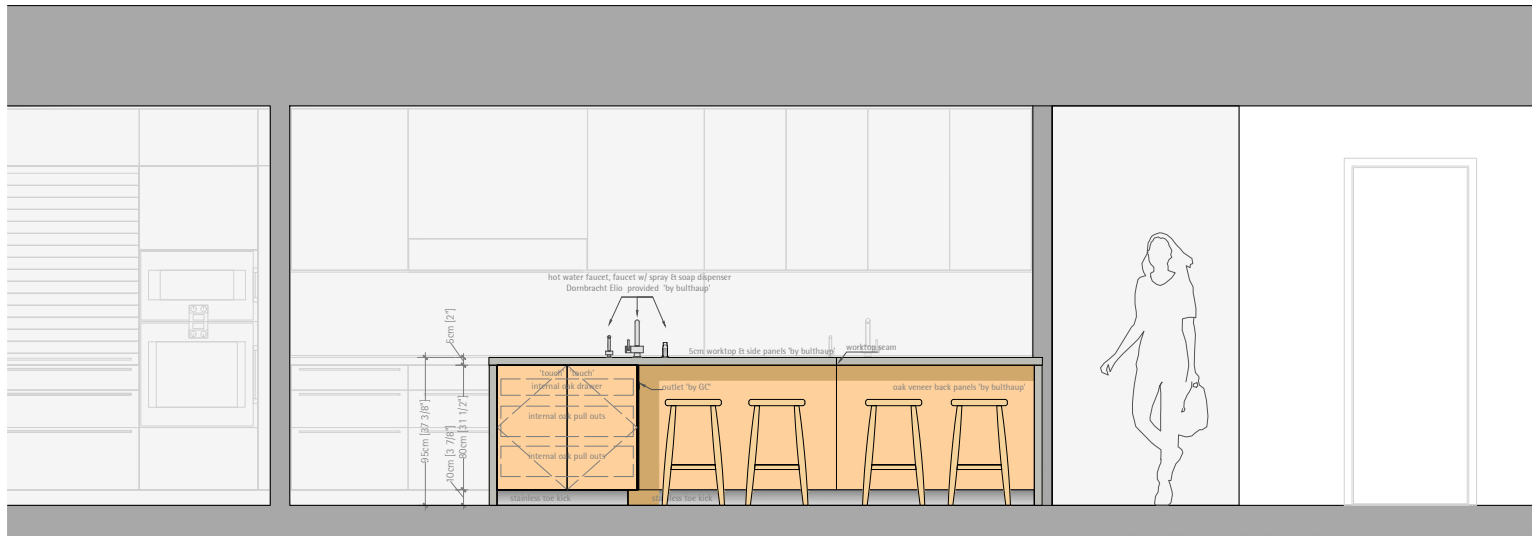
island cab.
 1x dish grill 70 GR 90 EI 49
 2x plate holders 70 TH 15 LA 3



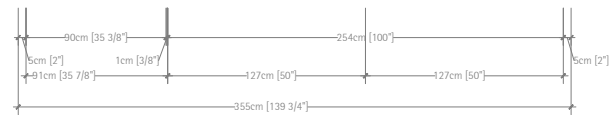
island cab.
 1x dish grill 70 GR 90 EI 49
 2x plate holders 70 TH 15 LA 3

finishes:

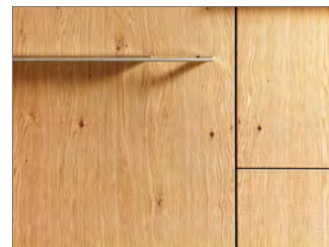
- island base units *EIVH* - oak veneer
 vertical grain
 56 - natural grey
 dull mat
- tall units *A1AX* - aluminum
 21 - alu natural
- worktop *KSM1* - quartz
 5cm
KD - light grey
- handles *G2 CN*
 long stainless steel
 handles
- G5* and *TM G0*
 touch (where noted)
- drawer box steel box
 14 silver-grey



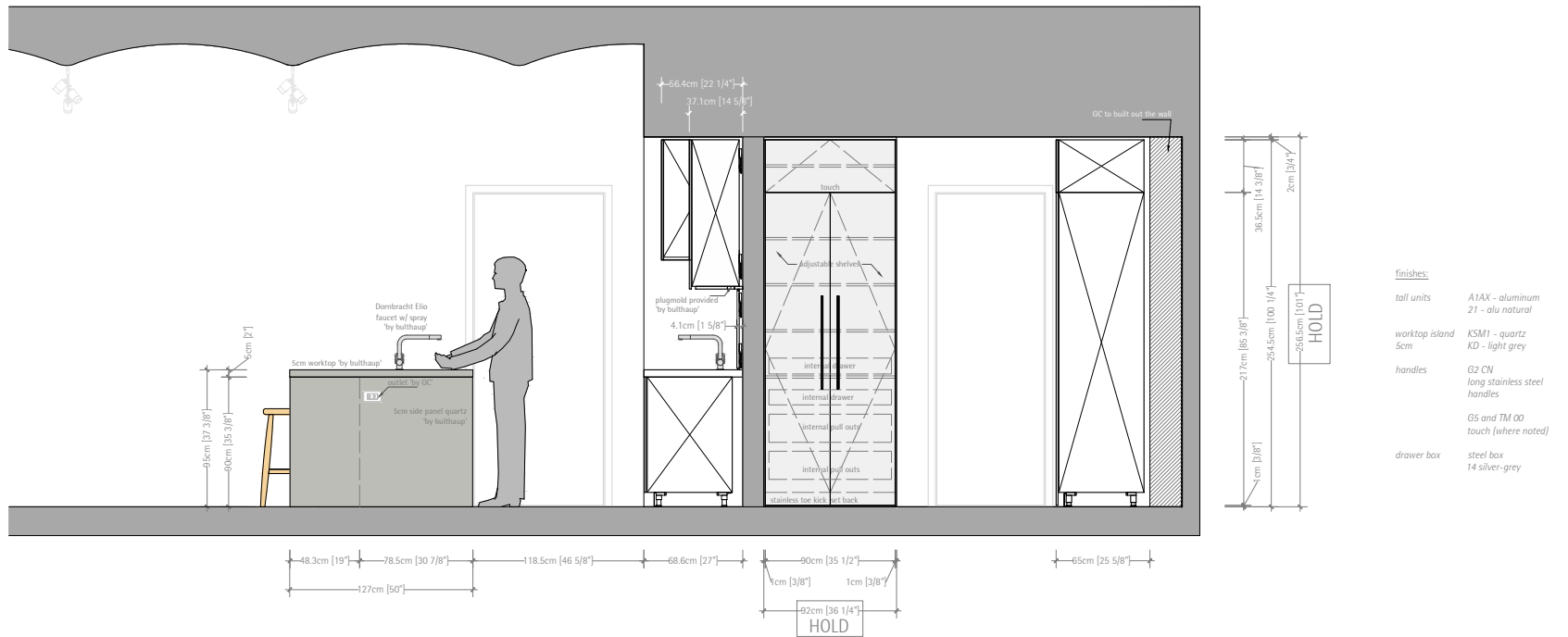
- finishes:**
- island base units E1V1 - oak veneer
vertical grain
S6 - natural grey
dull mat
 - tall units A1AX - aluminum
21 - alu natural
 - worktop KSM1 - quartz
5cm KD - light grey
 - handles G2 CN
long stainless steel
handles
 - G5 and TM G0
touch (where noted)
 - drawer box steel box
14 silver-grey



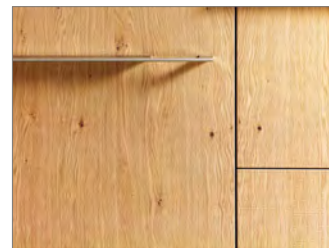
Elevation C



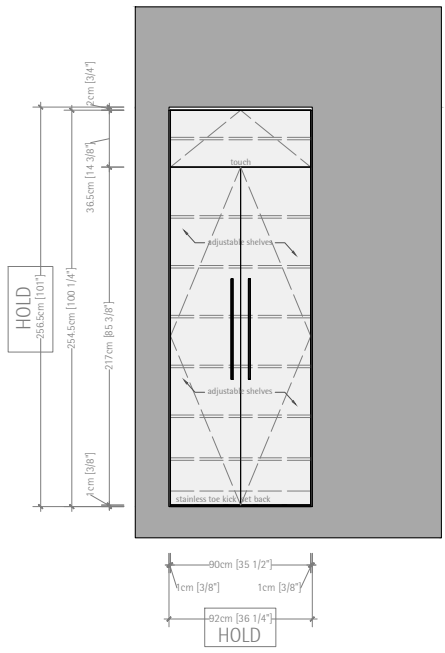
content Elevation C
date December 07, 2017
sheet 6 of 12



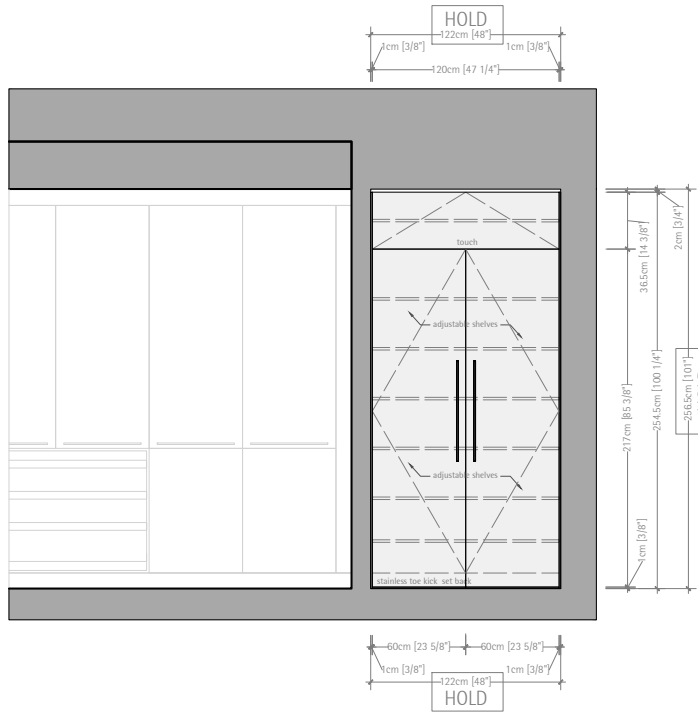
Elevation D



content Elevation D
 date December 07, 2017
 sheet 7 of 12

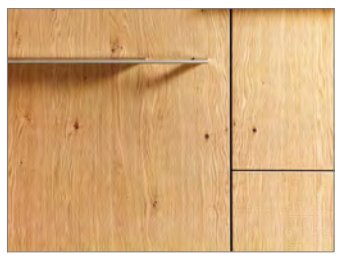


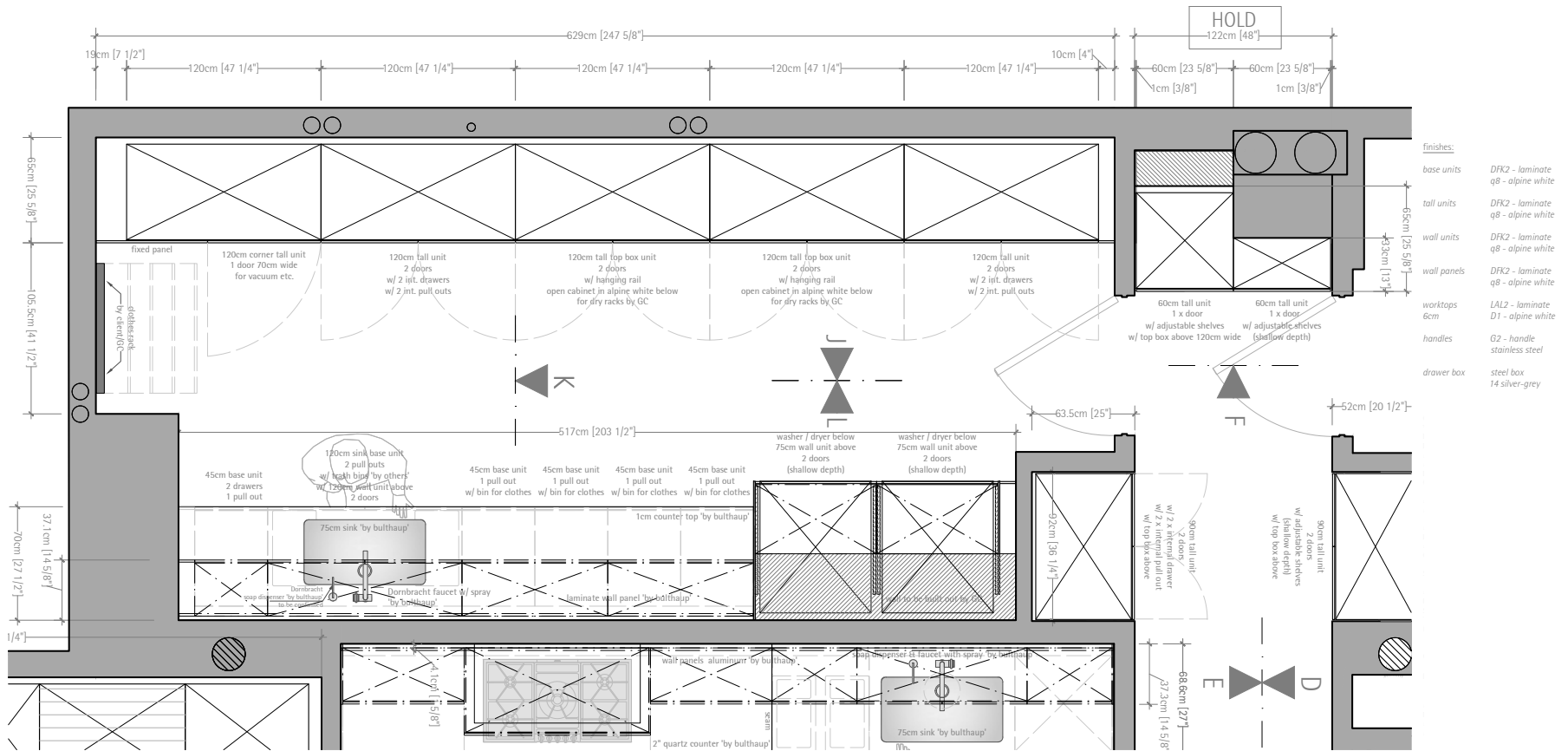
Elevation E

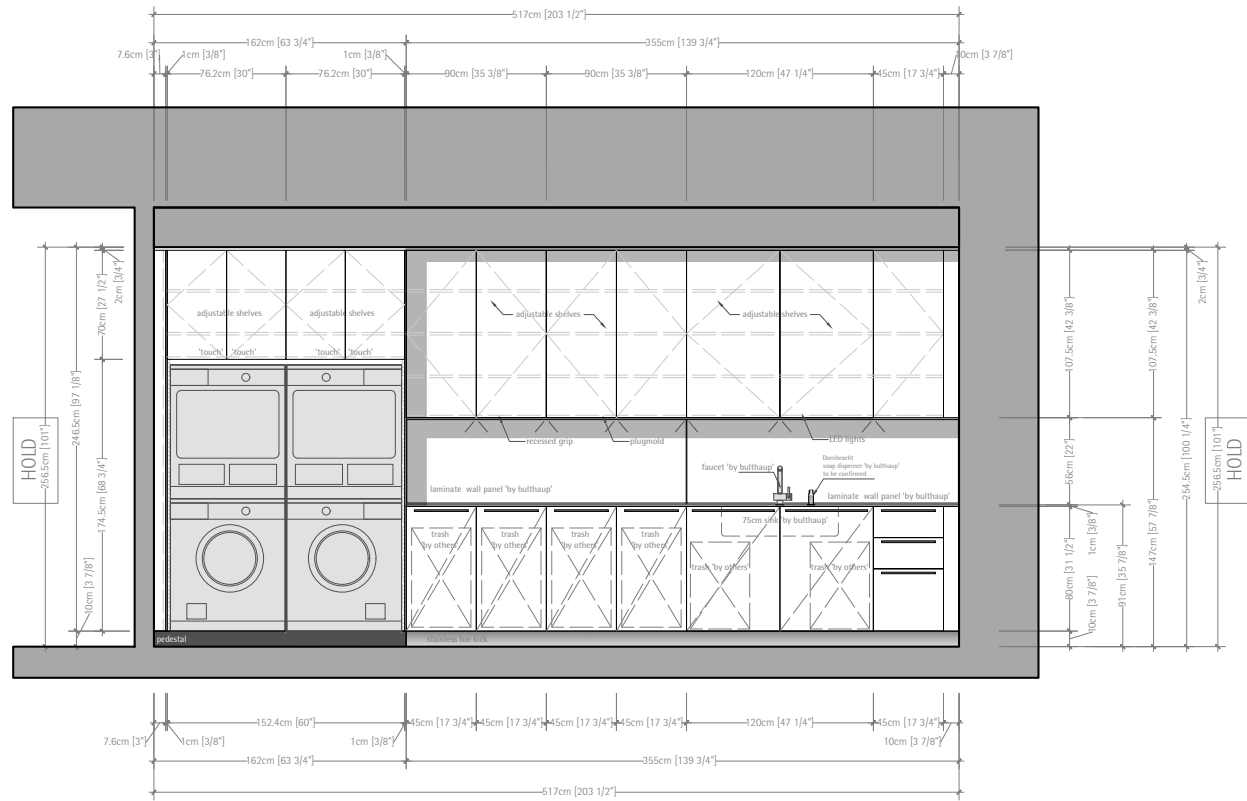


Elevation F

- finishes:*
- tall units* A1AX - aluminum
21 - alu natural
 - handles* G2 CN
long stainless steel
handles
 - G5 and TM 00
touch (where noted)
 - drawer box* steel box
14 silver-grey

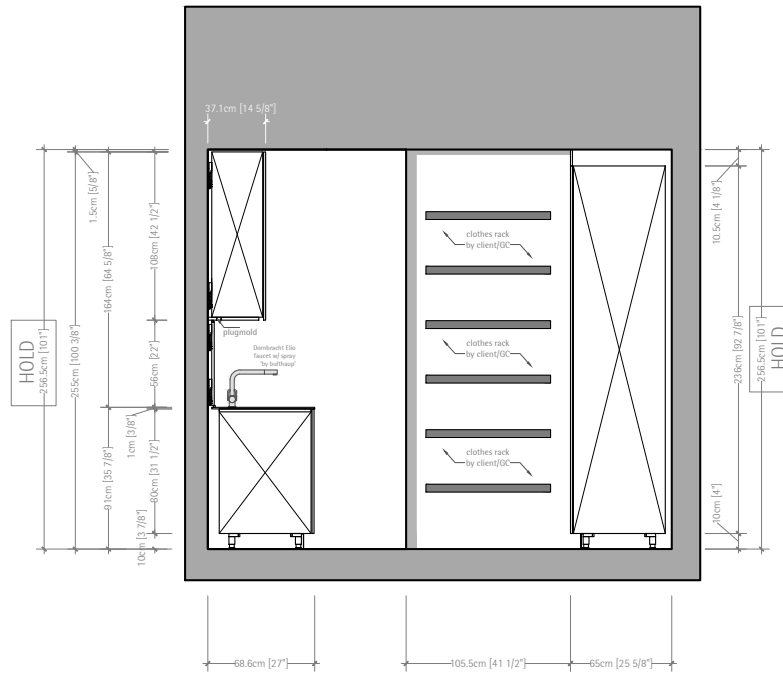






- finishes:
- base units DFK2 - laminate
q8 - alpine white
 - tall units DFK2 - laminate
q8 - alpine white
 - wall units DFK2 - laminate
q8 - alpine white
 - wall panels DFK2 - laminate
q8 - alpine white
 - worktops LAL2 - laminate
D1 - alpine white
 - handles G2 - handles
stainless steel
 - drawer box steel box
14 silver-grey

Elevation A - Laundry



Elevation B - Laundry

finishes:

- base units DFK2 - laminate
q8 - alpine white
- tall units DFK2 - laminate
q8 - alpine white
- wall units DFK2 - laminate
q8 - alpine white
- wall panels DFK2 - laminate
q8 - alpine white
- worktops LAL2 - laminate
6cm D1 - alpine white
- handles G2 - handles
stainless steel
- drawer box steel box
14 silver-grey

SUGGESTED MECHANICAL ONLY - MAIN KITCHEN

NOTE: ALL CONNECTIONS MUST BE DONE IN ACCORDANCE TO LOCAL CODES

All appliances installed according to specifications

APPLIANCE SCHEDULE IN REQUIREMENTS @ 151 Wooster Street - MAIN KITCHEN

- 30" Single Oven, GAGGENAU - BO 481 811, left hinge (D08220-240V, 60Hz, 25 Amp)
- 30" Speed Microwave Oven, GAGGENAU - BM 485 710, left hinge (D08240V, 60Hz, 40 Amp)
*Plan for a 2" connecting cable without plug (hardware required)
- 24" Gas Cooktop, GAGGENAU - W2 290214 CA, 120V, 60Hz, 2 Amps(GAS)
Connecting cable 5' with plug
- 40" Liner hood w/ internal motor, Wolf - PL 402212 (110V/120 VAC, 60Hz, 15Amps, Duct 10" Diameter)
- 150cmEcozy - Evolution Series (150V, 60Hz, 8.1 Amp)
- 1" Instant Hot Water Dispenser, Winkinator - HW1-F1005 (115V, 6.25Amps, 30-125psi, WATER)
Heating element with grounding 3-prong plug
- 2" Dishwasher, MIELE - G68B S2V AM, 110V/120V, 60Hz 15Amps, 4.35-145psi, WATER
Power cord NEMA 5-15 plug, 5% connective to hardware
- 30" WINEFRIDGE - Evolution Series (120V, 60Hz, 8.1 Amp)
- 1" Instant Hot Water Dispenser, Winkinator - HW1-F1005 (115V, 6.25Amps, 30-125psi, WATER)
Heating element with grounding 3-prong plug
- 2" Dishwasher, MIELE - G68B S2V AM, 110V/120V, 60Hz 15Amps, 4.35-145psi, WATER
Power cord NEMA 5-15 plug, 5% connective to hardware
- 24" Refrigerator Column, GAGGENAU - RC 462 701, left Hinge (120V/160V, 60Hz 15Amps)
Connecting cable 78" w/ with plug
- 24" Refrigerator Column, GAGGENAU - RC 462 701, Right Hinge (120V/160V, 60Hz 15Amps)
Connecting cable 78" w/ with plug
- 24" Freezer Column w/ water fill dispenser, GAGGENAU - RF 462 702, Right Hinge (120V, 60Hz, 15Amps, COLD WATER)
Connecting cable 78" w/ with plug.

SINKS:
75cm sink stainless steel - by builtup
55cm sink stainless steel - by builtup

BASINETS:
2x Dornbracht Eto Faucets provided by builtup
2x Dornbracht hot water dispenser provided by builtup

LIGHTS:
HAEFFLE LOOK LED strip lights - 2029

PLEASE NOTE: BULTHAUP CABINETS ARE FABRICATED PER ABOVE LISTED APPLIANCES.
ANY MODIFICATIONS TO THIS APPLIANCE LIST MAY RESULT IN DELAY OF PRODUCTION SCHEDULE AND/OR INCUR ADDITIONAL FURNITURE AND INSTALLATION COSTS.

ALL SITE DIMENSIONS TO BE FIELD VERIFIED AND COORDINATED BETWEEN A BULTHAUP REP. AND GENERAL CONTRACTOR.

CONVENIENCE OUTLET LOCATIONS
All convenience outlets located are a suggested guide only. Client/Architect to confirm all locations. Outlets to be installed in accordance with local code.

UNDER-CABINET/ SHELF LIGHTS
GC/Electician to provide ON/OFF light switch. Review/confirm location with client/architect.
GC/Electician to review/confirm with client/architect light switch option. -Independent/dedicated on/off switch or on/off switch as part of master lighting control type

Mechanical Symbols

- Gas Line
- Water Line
- Electrical Outlet 120 V
- Electrical Outlet 240 V
- Central Line
- Drain
- LED Light

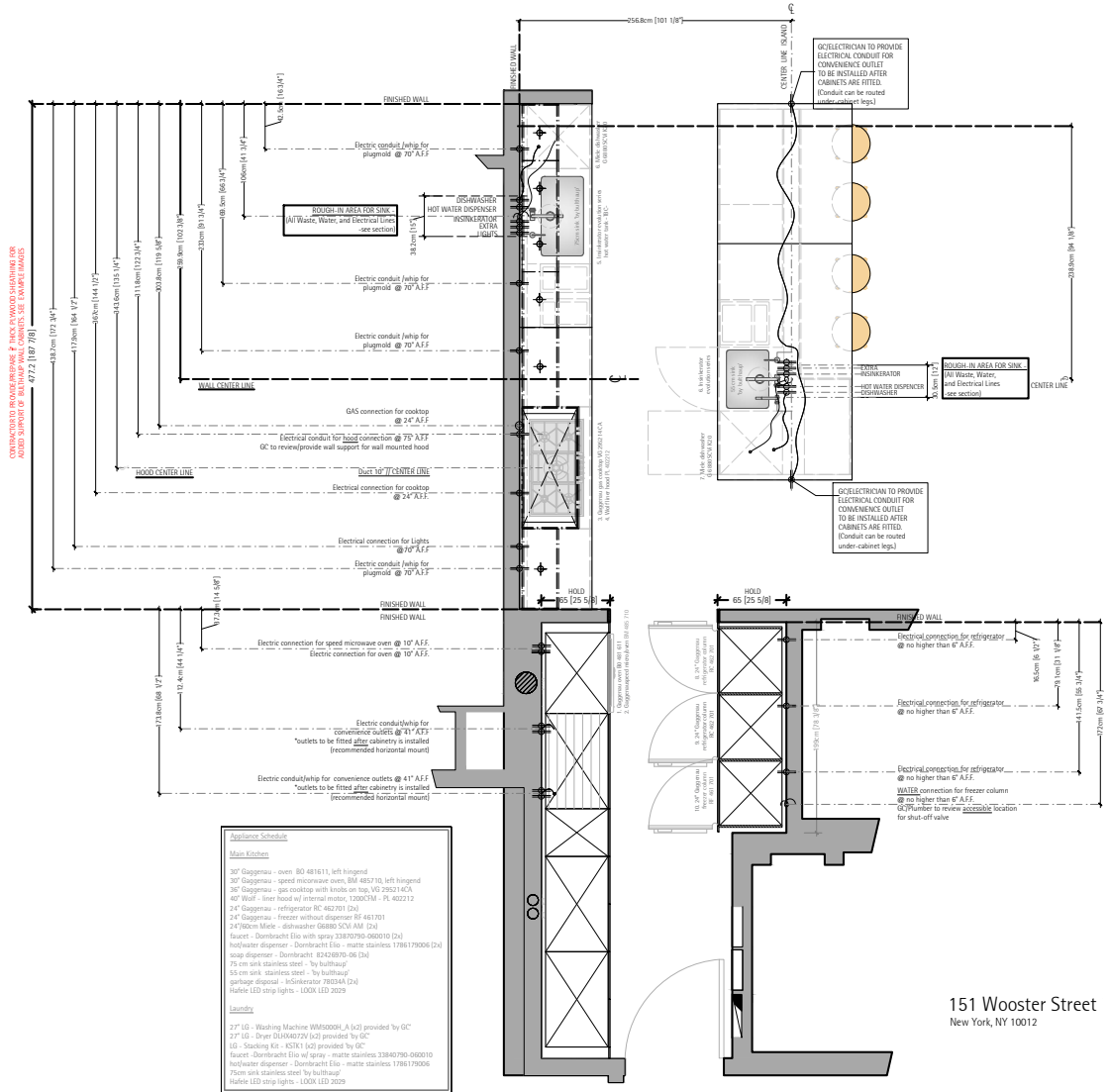
ALL CONNECTIONS MUST BE DONE IN ACCORDANCE TO LOCAL BUILDING CODES

NOTE TO CONTRACTOR:

- *SET ALL ELECTRICAL BOXES, WATER BOXES, & GAS VALVE FLUSH TO PLYWOODDRYWALL
- *NO EXTRUDED BOXES; EXTRUDED BOXES MAY INTERFERE WITH CABINETS & APPLIANCE FITTINGS.
- * Electrician to provide all receptacles/cover plates and make final connections
- * Plumber to provide all receptacles/cover plates and make all final connections.

bulthaup installers are not qualified electricians and/or plumber.

*D/C/M/C to provide and make all ducting connections bulthaup installers are not qualified HVAC



Appliance Schedule

Main Kitchen

- 30" Gaggenau - oven BO 481811, left hinged
- 30" Gaggenau - speed microwave oven, BM 485710, left hinged
- 30" Gaggenau - gas cooktop with knobs on top, W2 290214 CA
- 40" Wolf - liner hood w/ internal motor, 1200C1M - PL 402212
- 24" Gaggenau - refrigerator RC 462 701 (D)
- 24" Gaggenau - freezer without dispenser RF 461 701
- 24" 150cm Miele - dishwasher G68B S2V AM (D)
- faucet - Dornbracht Eto with spray 23870790-08010 (D)
- hot water dispenser - Dornbracht Eto - matie stainless 1781179006 (D)
- sink dispenser - Dornbracht Eto 424200-08 (D)
- 75 cm sink stainless steel - by builtup
- 55 cm sink stainless steel - by builtup
- garbage disposal - Winkinator 7803AA (D)
- Haeffle LED strip lights - LOOK LED 2029

Laundry

- 27" LG - Washing Machine WMS5000_A (L2) provided by GC
- 27" LG - Drier DL040027V (L2) provided by GC
- LG - Stacking Kit - KS7K1 (L2) provided by GC
- faucet - Dornbracht Eto w/ spray - matie stainless 2384730-08010
- hot water dispenser - Dornbracht Eto - matie stainless 1781179006
- 75cm sink stainless steel by builtup
- Haeffle LED strip lights - LOOK LED 2029

151 Wooster Street
New York, NY 10012

SUGGESTED MECHANICAL ONLY - MAIN KITCHEN

NOTE: ALL CONNECTIONS MUST BE DONE IN ACCORDANCE TO LOCAL CODES

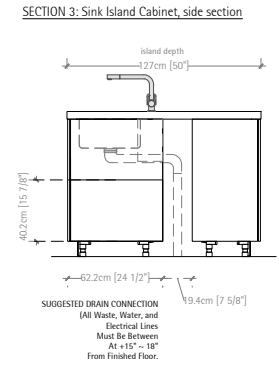
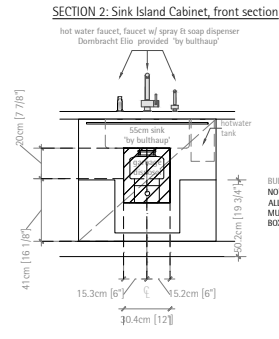
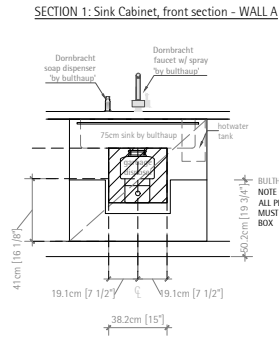
All appliances installed according to specifications

Note to plumber:

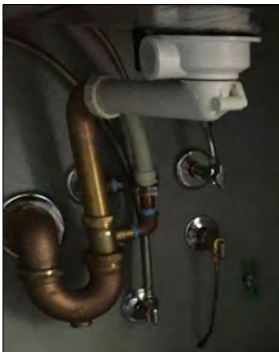
Sink plumbing requirements:
 Hold plumbing tight to the rear wall.
 Turn p-trap parallel to the rear wall to not interfere with built-in waste bins or pull out box.
 SEE IMAGES BELOW



BULTHAUP STRAINER
 < 7/8" FROM SINK BOWL
 (PROVIDED BY BULTHAUP)



EXAMPLE - STRAINER AND PTRAP



EXAMPLE - ELECTRICAL CONDUIT AT ISLAND



SUGGESTED MECHANICAL ONLY - MAIN KITCHEN

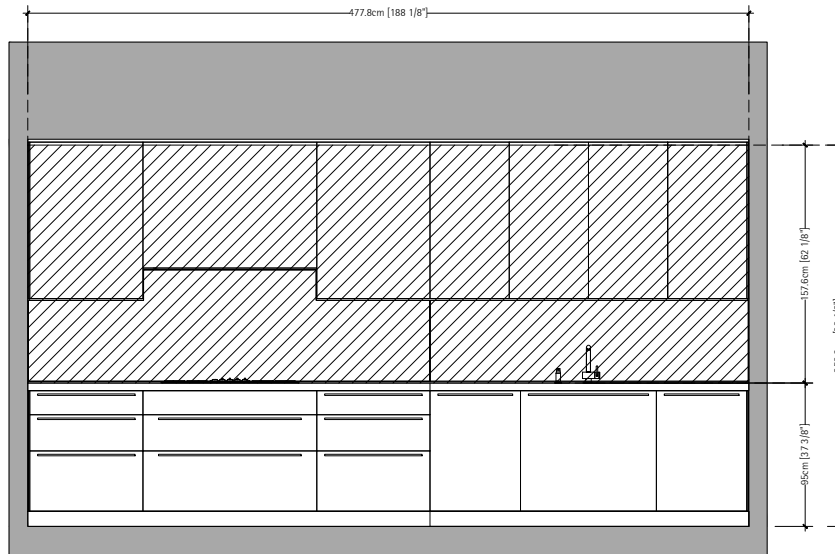
NOTE: ALL CONNECTIONS MUST BE DONE IN ACCORDANCE TO LOCAL CODES

All appliances installed according to specifications

Note to contractor:

Wall panel/shelving requirements:
 G.C. to provide 5/8" AC grade plywood sheathing @ 37 3/8" A.F.F. to 99 1/2" A.F.F. for support for wall panels and upper cabinets.
 Option for plywood to entire wall
 No sheetrock on top of plywood.
 All visible plywood will be covered by panels/cabinets.
 SEE IMAGES

NOTE TO CONTRACTOR TO PROVIDE/PREPARE 1" THICK PLYWOOD SHEATHING FOR ADDED SUPPORT OF BULTHAUP WALL CABINETS. SEE EXAMPLE IMAGES



EXAMPLE - PLYWOOD SHEATHING



EXAMPLE - PLYWOOD SHEATHING



SUGGESTED MECHANICAL ONLY - LAUNDRY

NOTE: ALL CONNECTIONS MUST BE DONE IN ACCORDANCE TO LOCAL CODES

All appliances installed according to specifications

APPLIANCE SCHEDULE & REQUIREMENTS @ 151 Wooster Street - Laundry

- 2.7' LG Washer - WH5000H_A (120V, 10Amps, WATER/DRAIN), hose included
- 2.7' LG Dryer - DLHX4072V (240V, 26Amps)
- LG STACKING KIT - KSTK1
- 2.7' LG Washer - WH5000H_A (120V, 10Amps, WATER/DRAIN)
Hose included*
- 2.7' LG Dryer - DLHX4072V (240V, 26Amps)
- LG STACKING KIT - KSTK1

SINK :
75cm by bulthaup*

FAUCET :
Provided* by bulthaup*

PLEASE NOTE: BULTHAUP CABINETS ARE FABRICATED PER ABOVE LISTED APPLIANCES. ANY MODIFICATIONS TO THIS APPLIANCE LIST MAY RESULT IN DELAY OF PRODUCTION SCHEDULE AND/OR INCUR ADDITIONAL FURNITURE AND INSTALLATION COST.

ALL SITE DIMENSIONS TO BE FIELD VERIFIED AND COORDINATED BETWEEN A BULTHAUP REP. AND GENERAL CONTRACTOR.

CONVENIENCE OUTLET LOCATIONS
All convenience outlets located are a suggested guide only. Client/Architect to confirm all locations. Outlets to be installed in accordance with local code.

UNDER-CABINET/ SHELF LIGHTS
GC/Electrician to provide ON/OFF light switch. Review/confirm location with client/ architect.
GC/Electrician to review/confirm with client/architect light switch option. -Independent/dedicated on/off switch or on/off switch as part of master lighting control type

Mechanical Symbols

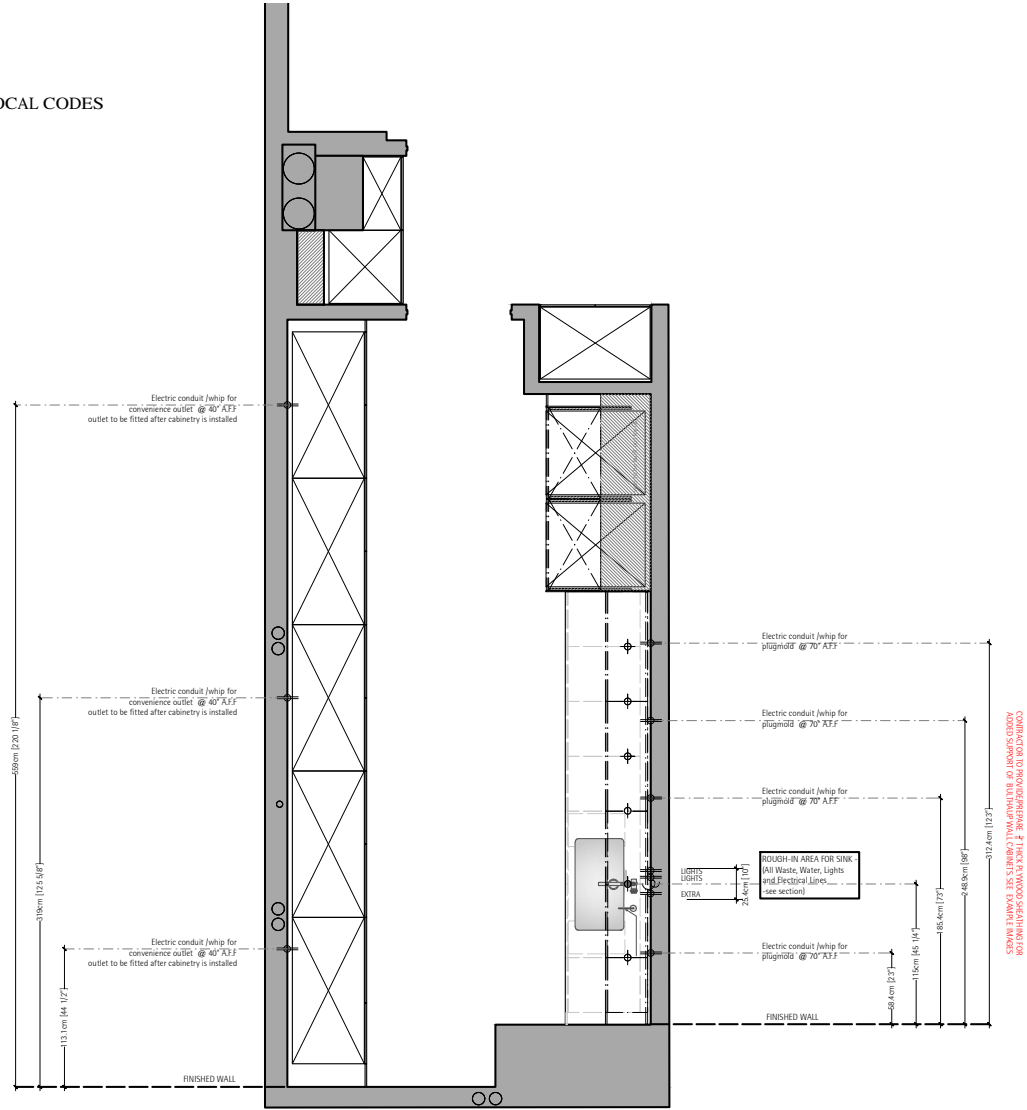
- Gas Line
- Water Line
- Electrical Outlet 120 V
- Electrical Outlet 240 V
- Central Line
- Drain
- LED Light

ALL CONNECTIONS MUST BE DONE IN ACCORDANCE TO LOCAL BUILDING CODES.

NOTE TO CONTRACTOR:

- * SET ALL ELECTRICAL BOXES, WATER BOXES, & GAS VALVE FLUSH TO PLYWOOD/DRYWALL.
- * NO EXTRUDED BOXES; EXTRUDED BOXES MAY INTERFERE WITH CABINETS & APPLIANCES FITTINGS.
- * Electrician to provide all receptacles/cover plates and make final connections

bulthaup installers are not qualified electricians and/or plumber.



CONTRACTOR TO PROVIDE ENGINEERING FOR FINISHED WOOD SPANNING FOR ABOVE SUPPORT OF BULTHAUP WALL CABINETS SEE EXAMINE MARKS

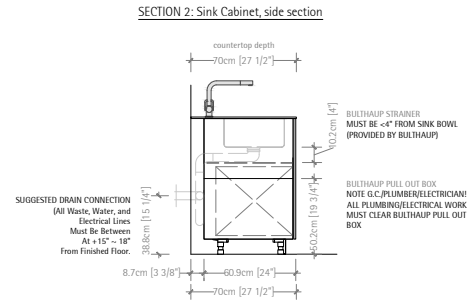
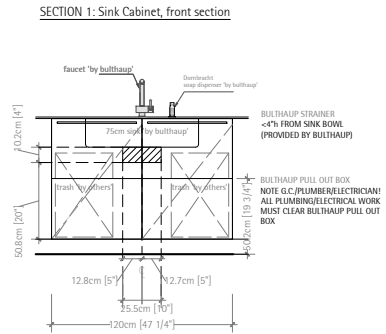
SUGGESTED MECHANICAL ONLY - LAUNDRY

NOTE: ALL CONNECTIONS MUST BE DONE IN ACCORDANCE TO LOCAL CODES

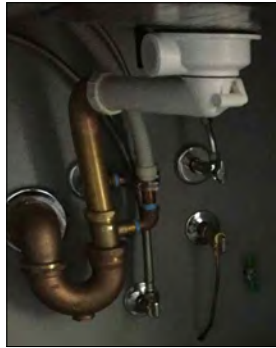
All appliances installed according to specifications

Note to plumber:

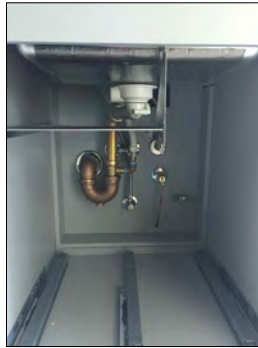
Sink plumbing requirements:
 Hold plumbing tight to the rear wall.
 Turn p-trap parallel to the rear wall to not interfere with Bulthaup waste bins or pull out box.
 SEE IMAGES BELOW



EXAMPLE - STRAINER AND PTRAP



EXAMPLE - WASHING MACHINE OUTLET BOX



SUGGESTED MECHANICAL ONLY - LAUNDRY

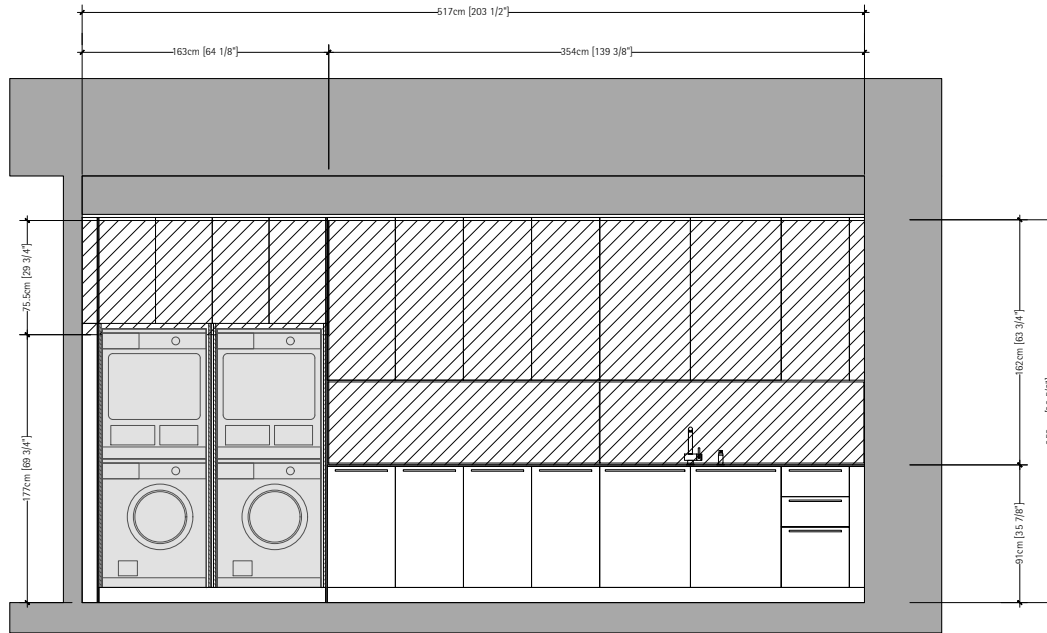
NOTE: ALL CONNECTIONS MUST BE DONE IN ACCORDANCE TO LOCAL CODES

All appliances installed according to specifications

Note to contractor:

Wall panel/ sheathing requirements:
 E.C. to provide 5/8" AC grade plywood sheathing @ 35 7/8" A.F.F. to 99 1/2" A.F.F. for support for wall panels and upper cabinets. Option for plywood to entire wall.
 No sheetrock on top of plywood.
 All visible plywood will be covered by panels/cabinets.
 SEE IMAGES

NOTE TO CONTRACTOR TO PROVIDE/PREPARE 5/8" THICK PLYWOOD SHEATHING FOR ADDED SUPPORT OF BULTHAUP WALL CABINETS. SEE EXAMPLE IMAGES



EXAMPLE - PLYWOOD SHEATHING



EXAMPLE - PLYWOOD SHEATHING

